

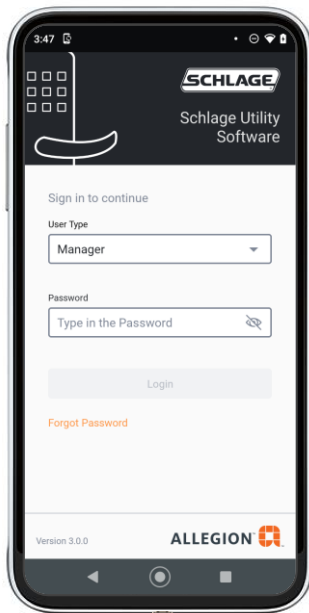


Schlage Utility Software (SUS)

The new [SUS Android App*](#) and Cable replaces the [HHD](#) for use on Schlage locks



Locks must have a minimum firmware level to work with the new app, see last page.



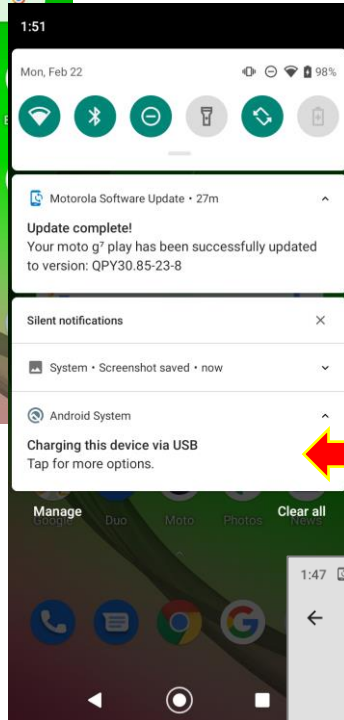
**Cable Part Number:
47282796 SUS A-KIT**

*Android device must have newer USB-C connector (can be plugged in either way) see specs on the [datasheet](#) for recommended mobile devices.

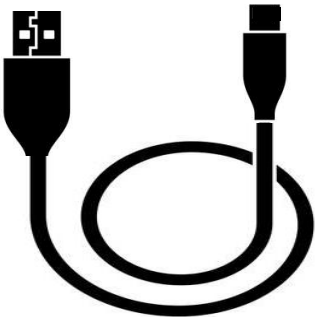
How To Transfer Firmware File (or Door Programming Files) for use with Schlage SUS App



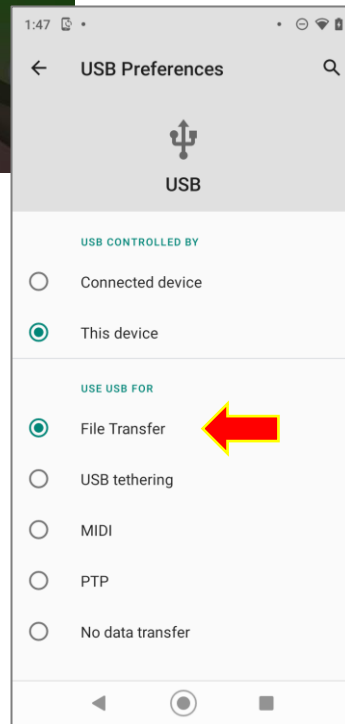
B. On a Moto device, log in and swipe down from the very top of the screen.



C. Tap to change USB connection type.



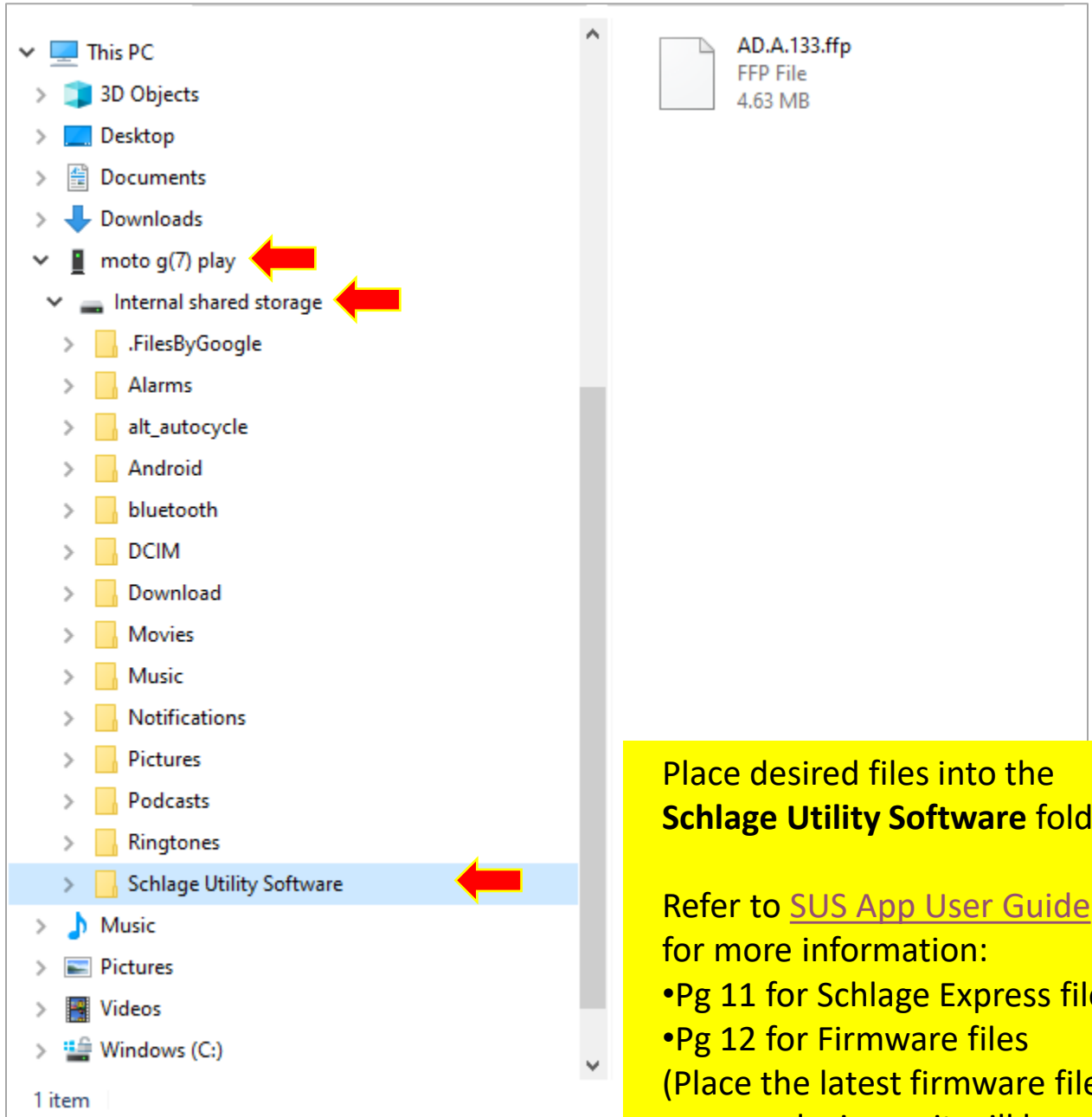
A. Plug your Android device into PC with the USB cable used to charge the device, NOT the Schlage cable.



D. Select *File Transfer* (see next page for what to do on PC)



The [Schlage Utility Software \(SUS\) App](#) must be installed on your device prior to transferring files. Plug your device into PC with USB cable used to charge the device (not the new Schlage lock cable).



Place desired files into the **Schlage Utility Software** folder

Refer to [SUS App User Guide](#) for more information:

- Pg 11 for Schlage Express files
- Pg 12 for Firmware files (Place the latest firmware file on your device so it will be ready for use as needed.)

IMPORTANT: Lock firmware must be at a minimum version to use the new SUS app and cable. See chart below and contact Allegion Tech Support (877-671-7011) for more information or assistance on loading the most current firmware file onto your HHD.

Device	Main FW
AD-400/401, AD300/301, AD-200/201	2.50.1
AD-402, AD302	2.2.1
AD-250	2.49.1
PIM400-485	2.30.1
PIM400-TD2	2.26.0
PIB300	2.19.1
WPR400/401	2.30.0
WRI400	2.9.2
CO-200 – keypad	2.14.2
CO-200 – mag stripe	2.11.2
CO-200 – proximity	2.14.1
CO-250 – mag stripe	2.13.1
CM	2.00TE
CL	1.42TD
KC2	1.09



HHD is required to update firmware on locks to a level compatible with the new SUS app.